



DC 2800c Rental

Part No 94103



instruktion  
user instruction  
Betriebsanleitung

serial no:

# Safety Considerations

Read all instructions before attempting to operate this machine and save these instructions.

**Warning!** When using electric machines, basic safety precautions should always be followed to reduce the risk of fire, electric shock and personal injury, including the following:

## 1. Work area environment

Don't expose the machine for rain. Don't use it in damp or wet locations or in presence of flammable liquids or gases.

## 2. Overload

Never let the machine operate fully throttled. Always follow the regulations pertinent to the material you are working with ie asbestos. Don't use the machine for purposes that it isn't intended for.

## 3. Body injuries

Never let the suction come in contact with parts of the body. The strong suction effect can hurt the blood-vessels in the skin. Don't repair the electric components yourself, get somebody qualified. Faults may cause injury. See also below under warnings.

## 4. Don't abuse cord

Never pull the machine by cord. Keep cord from heat and sharp edges. Check the electric cable regularly if damage.

## 5. Important measure

With cleaning and maintenance on the machine, the power cable should be dis-connected from the supply.

## 6. Maintain the machine with care

Keep machine clean and check that the hose is entered and that all gaskets are tight. Follow instructions. Keep handles dry and free from oil and grease.

## 7. Checking of damage

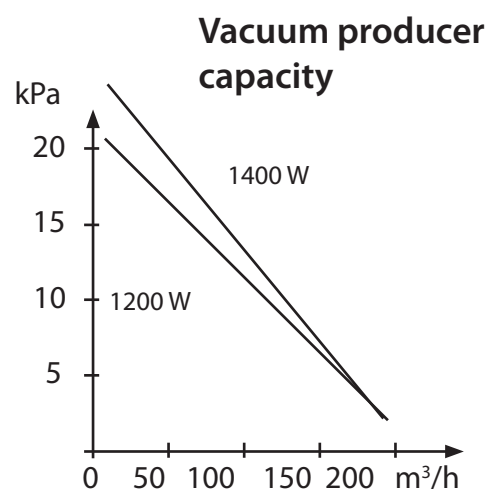
Before further use of the machine it should be carefully checked that the machine is undamaged. If there are any damaged parts these should be repaired by of a Dustcontrol authorized service center.

## 8. Warning

Use only accessories and replacable parts which are available in Dustcontrol catalogue.

## TECHNICAL DATA

HxWxL	1070x420x510 mm
Weight	14 kg
Inlet	φ 50 mm
Hose length	5 m
Collecting sack, 11 l	500x550 mm
Flow, max	190 m <sup>3</sup> /h
Neg. pressure, max	21/24 kPa
115/220V	
Power consumption	1200 /1400 W
115/220V	
Fine filter polyester, area	1.5 m <sup>2</sup>
Degree of separation	
(EN 60335-2-69, Class M)	99,9 %
Filter area, microfilter	0.85 m <sup>2</sup>
Degree of separation,	
microfilter	
(EN 1822-1)	HEPA H13
(EN 60335-2-69, Class H)	99,995 %
Sound level	< 68 dB(A)



# Description

The machine should be used for suction and separation of dried dust. The machine fulfils the demands for separation of unhealthy dust.

The DC 2800c Rental is, despite its compact size, a full capacity Dustcontrol machine. It is stable, tough and reliable and particularly suited to spot extraction in many different applications ie: welding, grinding, sanding and cleanup with the 38 mm program. Dust separation is in any case as efficient as with the larger Dustcontrol machines.

The design is ergonomic and appealing. With a very

low sound level of 70 dB(A) at 1m distance, the DC 2800c Rental is suitable for use in areas which are sensitive to noise. The direct drive two stage high pressure fan is integrated into the unit's top. The 1200W capacity fan is double insulated for higher safety.

The DC 2800c Rental is equipped with a running time meter to be able to estimate for example; the need for a HEPA filter change. On the cover is a connection for a digital negative pressure meter where an engineer can judge the condition of the main filter.

# Operation

Connect the unit to a suitable power source, note requirements on the ID plate. If an extension cord is to be used, only waterproof cords are acceptable.

The DC 2800c Rental is equipped with a filter indication lamp that indicates when the filter needs cleaning or changing. The filter is generally cleaned once or twice daily during normal continuous operation. The unit must be in operation to perform filter cleaning. Loosen the tube from the suction pipe and press the plastic cage against the black stop head on the exhaust channel so that maximum pressure is created in the cyclone.

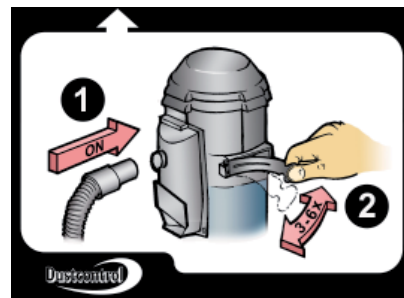
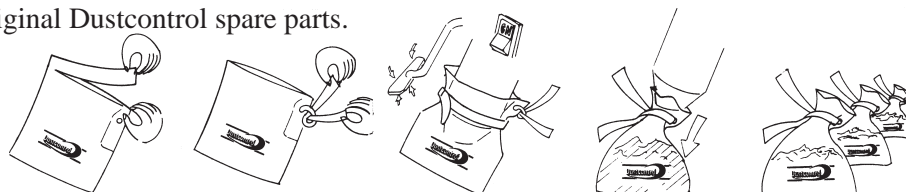
Open the port on the side of the unit three to six times. This reverse pulse of air cleans the filter.

To make an easier decision when you should change the filter, the machine is equipped with a connection to which you connect a digital negative pressure meter. With help of the meter you get information about the condition of the filters.

The plastic sack should be changed only after filter cleaning is done and when the collected material level is about 5 cm under the foot valve.

The collection sack must be tied off when it is removed from the unit. This is most easily done with the sack's own tie strap. Be sure to put on a new strap before installing a new collection sack. Follow the instructions below.

Use only original Dustcontrol spare parts.



# Service

During cleaning and service of the unit, the unit should be disconnected from the power supply.

The fine filter should be changed at least once per year. Use only original parts for replacement. If the unit is equipped with a HEPA filter, this filter should be changed every 300 working hours. Use breathing protection and perform this operation in a contained area. The used filter should be placed in containment and disposed of in the proper and prescribed method.

## Filter change:

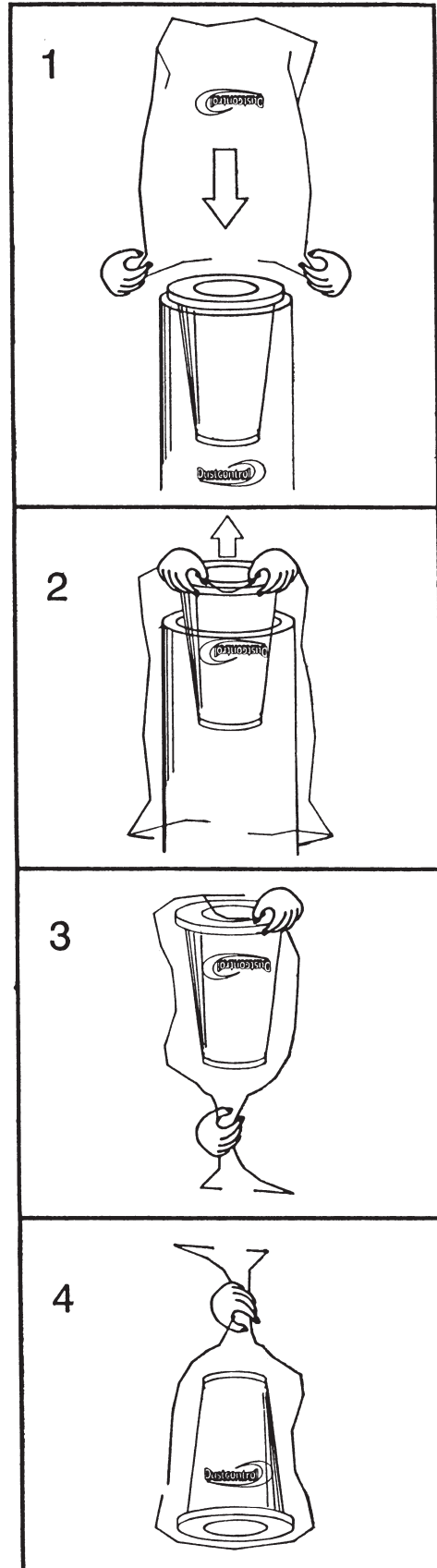
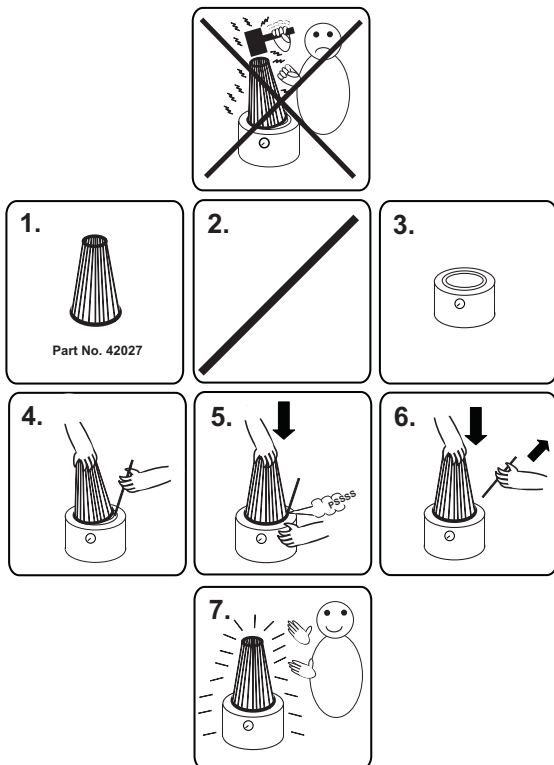
Remove the motor head. Lift the filter straight up out of the cyclone. When required, a plastic sack can be placed over the cyclone for dust-free filter change. The filter is lifted directly into the sack.

During the filter change, check the filter gasket. A damaged gasket can allow the release of hazardous dust. Never use old gaskets or after-market filters. Use only genuine Dustcontrol spare parts to maintain the unit for use on hazardous dusts.

Check regularly that the electrical cable is not damaged. The DC 2800c Rental should be performance tested at least once per year because it may be used with hazardous materials. Worn parts must be replaced.

The vacuum motor is maintenance free.

## Filterchange HEPA filter:



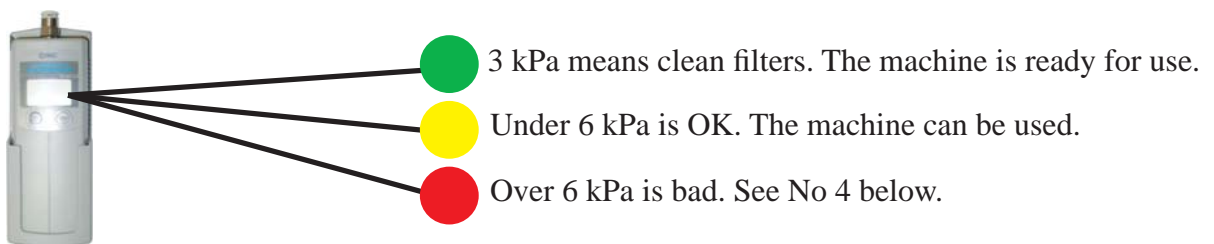
# Service

## How you use an external negative pressure meter together with the DC 2800c Rental:

- 1 Be sure of that both fine- and HEPA-filter is placed properly. Control that there is no damage on the filters. Change damaged filter.
- 2 Disconnect the standard hose from the inlet.



- 3 Start the machine and connect the external negative pressure meter without using any tool. Read the meter.



- 4 If the meter show more than 6 kPa - clean the filters and messure according to above.
- 5 If the meter still show more than 6 kPa - change the finefilter and messure again.
- 6 If the meter still show more than 6 kPa - change the HEPA-filter and messure again.